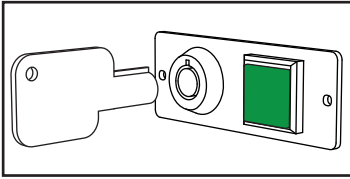


# Self-Watering Floralwall Cleaning

## Fixtures with Key Switch and Light Button



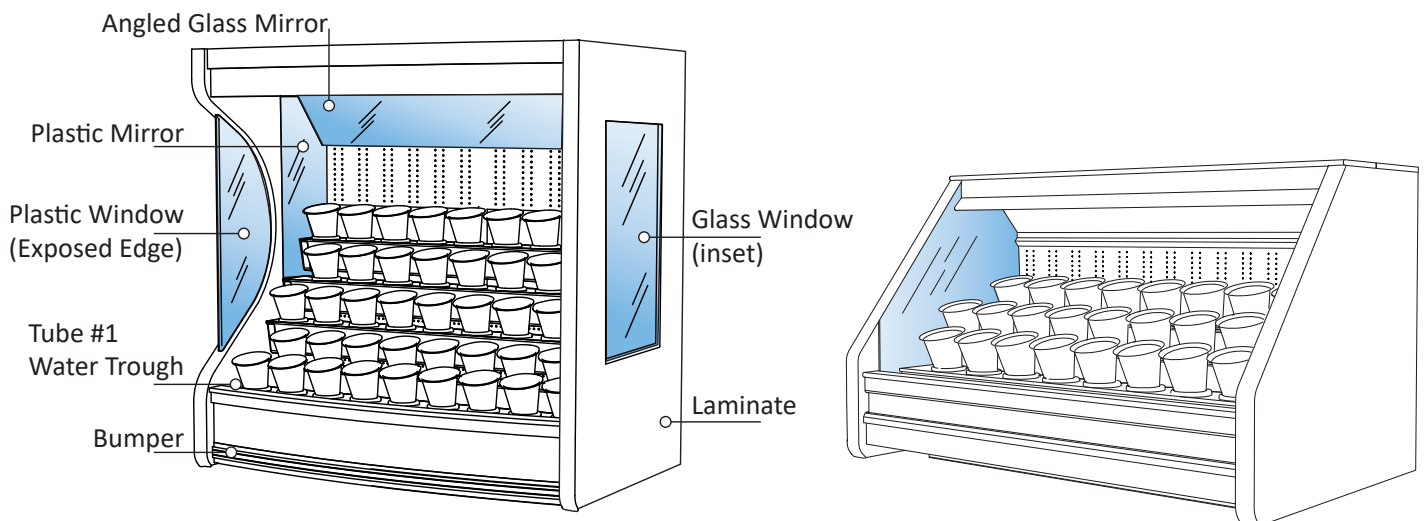
Follow these guidelines for cleaning our current generation self-watering fixtures. Both high and low profile (SP and MP) are covered.



This fixture version has a key slot and lighted button to control draining.

While Floraline floral display cases automatically change water in the manifolds and vases at a predetermined time, a regular cleaning program must also be implemented. This will ensure many years of dependable service from your Floraline case, guarantee floral freshness and continued customer satisfaction with each and every purchase.

- ❖ **Weekly** - Clean the case exterior and sanitize the vases.
- ❖ **Monthly** - Drain and clean the water manifolds.
- ❖ **Yearly** - Remove Manifold #1 and clean the case bottom and drains.



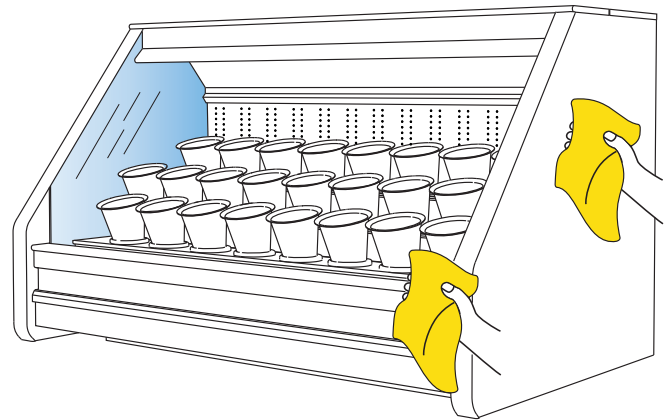
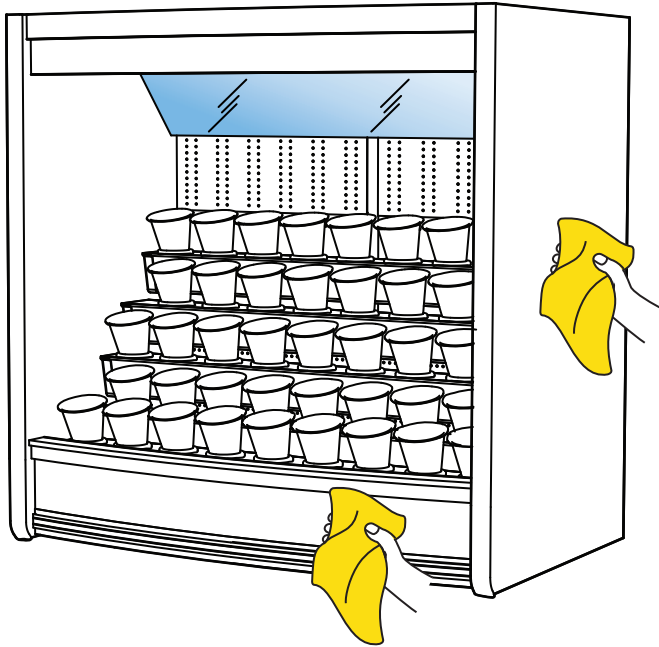
This illustration calls out the basic parts of the fixture that are referred to in this manual.

# EACH WEEK

## Cleaning the Case Surface



A mild soap and water solution applied with a soft cotton cloth or soft sponge is recommended for the **painted, metal and laminate surfaces** of the display cabinet. Ensure all cleaning materials are clean and free of dirt or grit as these will cause scratching. **DO NOT USE CLEANERS THAT CONTAIN AN ABRASIVE MATERIAL.** Using abrasive cleaners will scratch and dull the cabinet's finish.

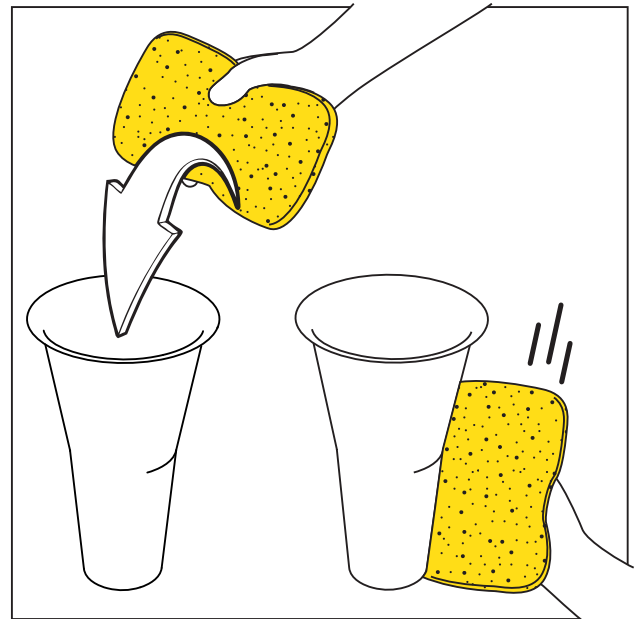


## Cleaning Mirrored Plastic

Care must be taken when cleaning any mirrored plastics to prevent scratching. Never use paper towel or glass cleaning products on plastics. **Please review the detailed section, MIRROR MAINTENANCE, included with these instructions.**

## Cleaning the Vases

A floral cleaning disinfectant solution applied with a soft cotton cloth or soft sponge is recommended. Wipe the vase inside and out to eliminate any residue. Ensure all cleaning materials are free of dirt and grit as these will cause scratching and bacterial contamination. A clean vase is critical to good floral health. Ask your floral products supplier for help in choosing the correct cleaner.

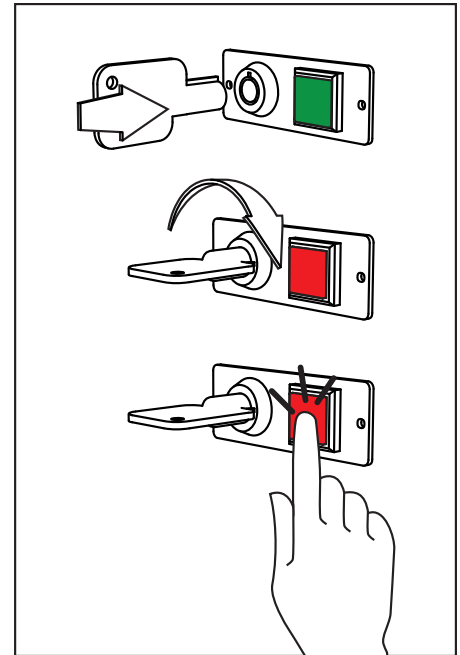


# EACH MONTH

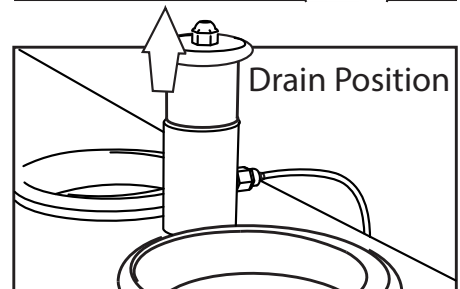
## Drain and Clean Water Manifolds



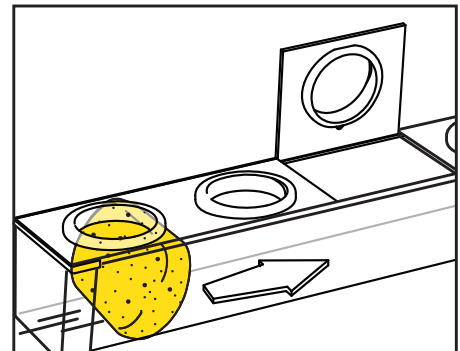
1. Insert and turn the key clockwise to engage the manifold drain mode. The button light will change from GREEN (Normal Operation) to RED (Drain Mode). The key cannot be removed when it is in this position. Press and release the button to drain each row.
2. Press the button once to drain row one. Press the button a second time to drain row two. Press the button a third time to drain row three and so on. The process will time out if left unattended but may be restarted at any point in the process. For example; to restart at row three, repeat step 1 then press the button three times. Row three will start its drain cycle.



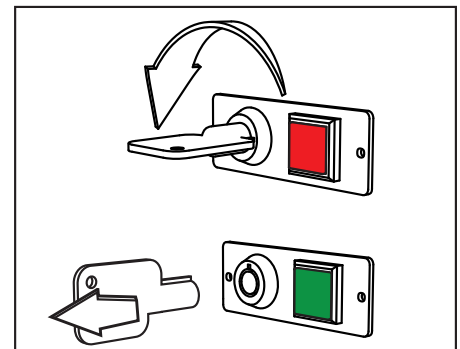
As draining begins, you will see the drain valve piston automatically raise, indicating an open drain.



3. After draining, remove the vases from that row. Insert a large sponge or cotton cloth through the hinged access door or vase holes on the top of the water manifold and clean inside the manifold. Use a wiping motion from one end to the other to clean debris from the manifold. Remove any debris by hand.



4. To finish, turn the key counterclockwise. The button light will turn GREEN indicating Normal Operation and the water manifold will refill. The key can now be removed.



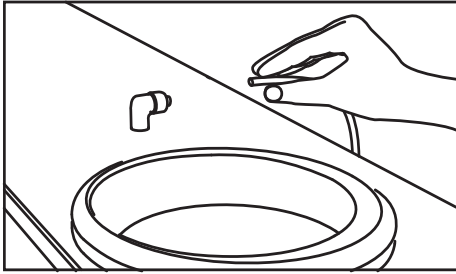
Note: You may hear a clicking sound from the water pressure switch, this is normal.

# EACH YEAR

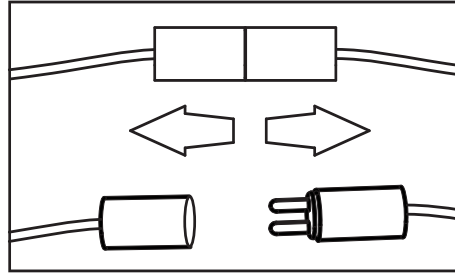
## Removal of Manifold Row #1 for Internal Case Cleaning



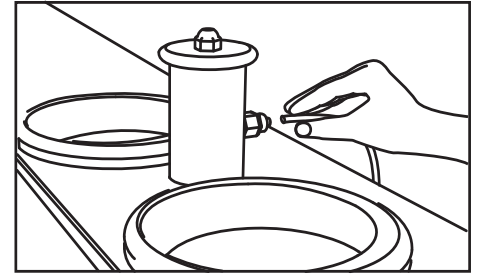
There are three connectors to the water manifold that must be unattached before it can be removed. There are two styles of water line connectors that may be used, see below.



Fill - Hose Connection

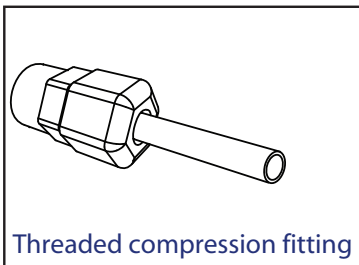


Float - Two prong plug

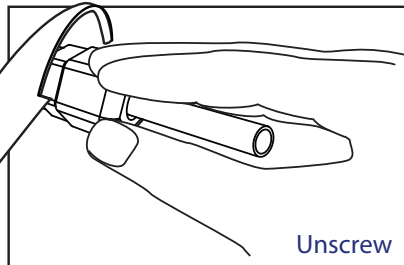


Drain - Hose Connection

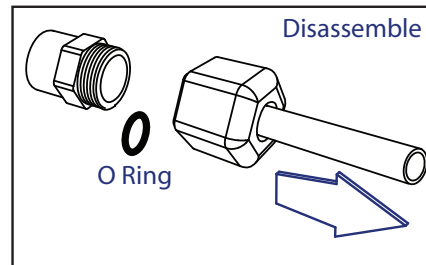
### Fast-Tite® Connection Detail



Threaded compression fitting



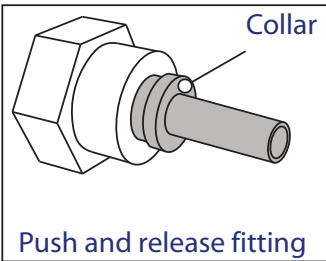
Unscrew



Disassemble

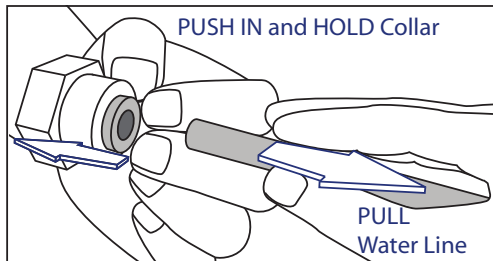
O Ring

### TrueSeal® Connection Detail



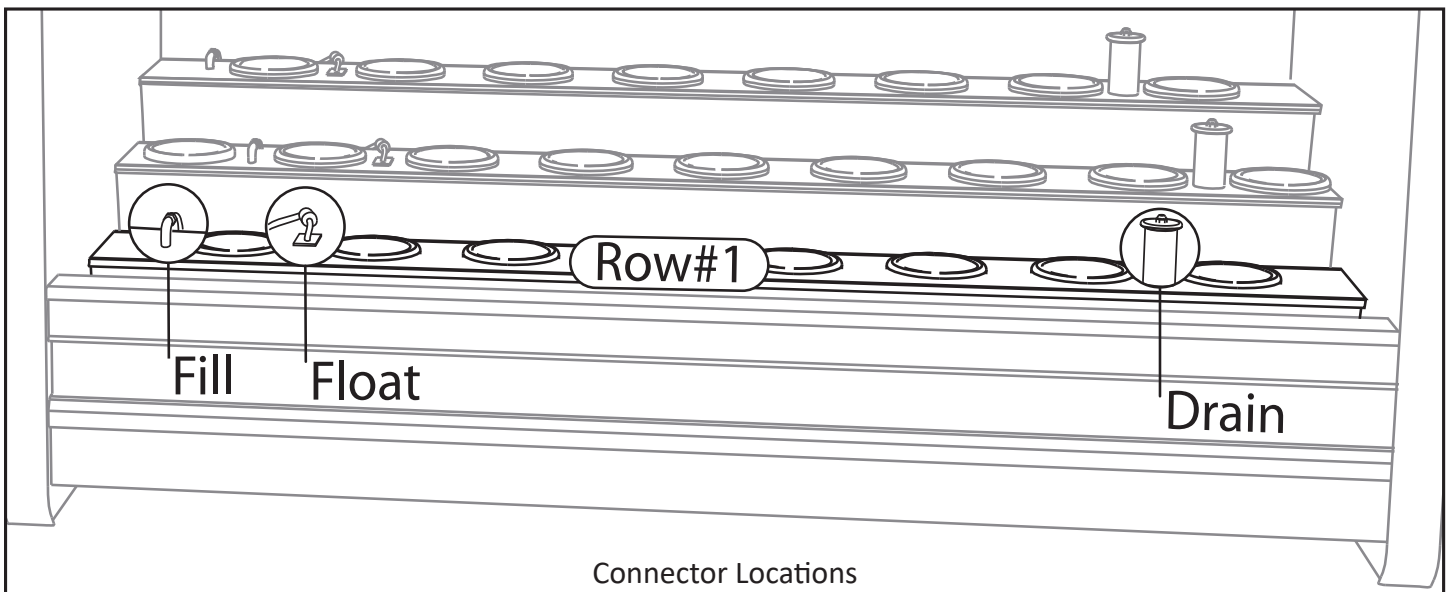
Collar

Push and release fitting



PUSH IN and HOLD Collar

PULL Water Line



Connector Locations

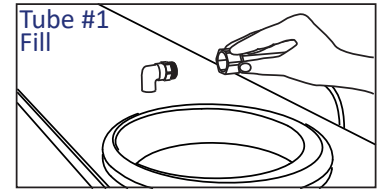
# EACH YEAR

## Removal of Manifold Row #1 and Internal Case Cleaning

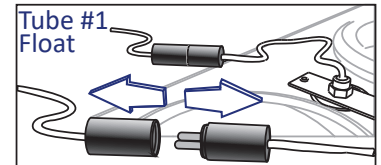


1. On Manifold #1 ONLY. **Drain the water** to prepare it for disassembly and cleaning. **Refer to the “Each Month” section.**

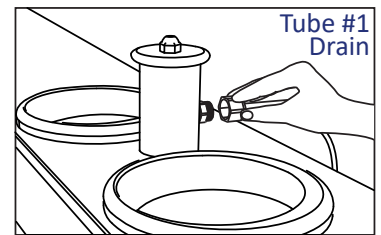
2. On Manifold #1 ONLY. **Remove the fill fitting BY HAND.**



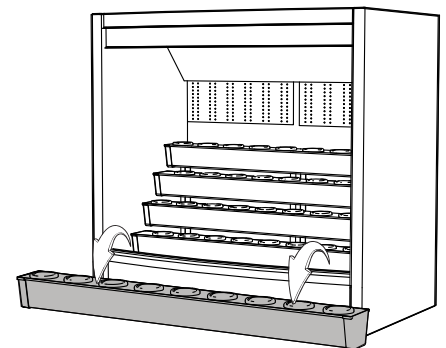
3. On Manifold #1 ONLY. **Disconnect the float connection BY HAND**, pull the electrical connector straight apart.



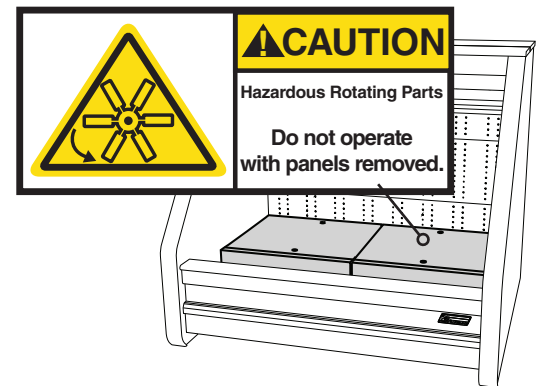
4. On Manifold #1 ONLY. **Remove the drain fitting BY HAND.**



5. When empty and disconnected, lift Manifold #1 out of the fixture and place it on a flat surface that will support it safely. Place it out of the way so as not to cause a trip hazard. It is advised to use two people to lift and carry the manifold.



6. Inspect and clean the inside of the case; sides, bottom and drains. A wet / dry vacuum is ideal to remove any loose debris. A floral cleaning disinfectant solution applied with a soft cotton cloth is recommended to wipe down the inside of the case. **Caution: The circulation fans located below the case deck run continuously. DO NOT remove the deck panels. Serious injury may occur.**



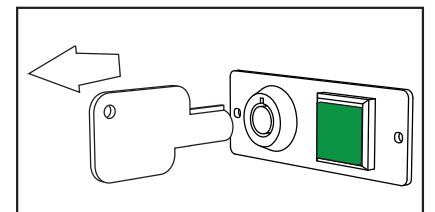
After cleaning, replace Manifold #1. Use two people to lift and carry the manifold. Ensure that it is seated correctly in its supports and it is level.

7. Reconnect the drain fitting.

8. Reconnect the float connector so that both halves meet tightly.

9. Reconnect the fill fitting.

The fixture is now ready to refill. Turn the key counterclockwise. Water will enter the manifold. **Check water connections for any leaks.** The key can now be removed.



## PLASTIC MIRROR MAINTENANCE

### Interior Sides and Slat wall



Each mirrored product is well protected by a durable paint backing and a removable masking on the front. If there is difficulty in removing the masking, use aliphatic naphtha, kerosene, or distilled alcohol to moisten the adhesive. **Do not use other chemicals or sharp objects to remove the masking.**

### Care and Cleaning

For typical cleaning, dampen a soft cotton cloth in a mixture of clean water and mild dish soap. Ensure the bucket and cloth are clean and free of dirt or grit as these will cause scratching to the mirror. Use only light pressure to wipe the surface. **NEVER use aggressive scrubbing pressure, paper towels, window-cleaning sprays, kitchen scouring compounds or other chemicals to clean the mirror as these will all cause scratching or damage.**

If your mirror does become scratched, any repair is best left to the attention of a professional. In some cases repair is not possible and a damaged mirror may require new installation.

To remove grease, oil or tar deposits on the material, hexane, kerosene or aliphatic naphtha may be used applied with a soft cotton cloth and light pressure. **Do not use any chemicals if there is a painted or printed design on the mirror.**

### Chemical Resistance

Like all plastic materials, mirrored acrylic will react when exposed to many chemicals. Factors such as fabrication stresses, exposure to loads, changing temperatures and the method of application can all influence the possible reaction. In all cases, care should be taken with any chemicals or solvents used near mirrored acrylic.

**Below is a partial list of chemicals known to react with acrylic mirror; exposure to them should be avoided.**

ACETONE, BENZINE, ETHYL ALCOHOL, LACQUER THINNER, KETONES, ESTERSTOLUENE, METHYL ALCOHOL, CARBON TETRACHLORIDE, ETHERS.

## LAMINATE MAINTENANCE

### Exterior Sides

To clean the surface, use a soft damp cotton cloth or sponge and a mild dish soap. Difficult stains such as coffee or tea can be removed using a mild household cleaner/detergent and a soft bristle brush, repeating as necessary. If a stain persists, use a paste of baking soda and water and apply with a soft bristled brush. Light scrubbing for 10 to 20 strokes should remove most stains. Although baking soda is a low abrasive, excessive scrubbing or exerting too much force could damage the decorative surface, especially if it has a gloss finish. Stubborn stains that resist any of the above cleaning methods may require the use of undiluted household bleach. Apply the bleach to the stain and let it stand no longer than two minutes. Rinse thoroughly with warm water and wipe dry. This step may be repeated if the stain appears to be going away and the color of the laminate has not been affected. **WARNING:** Prolonged exposure of the laminate surface to bleach will cause discoloration.

### Special Tips

Always rinse laminate surfaces after cleaning. Failure to rinse after cleaning is the single greatest cause of damage to a laminate surface. Moisture can reactivate the smallest amount of cleaning solution remaining on the surface and result in permanently etched scars or discoloration. Always rinse thoroughly with clean water and a clean soft cotton cloth. **It is always recommended to test any new cleaning product first on an inconspicuous section of the case.**

This document and other support resources are available on line at [www.floraline.com/Manuals.php](http://www.floraline.com/Manuals.php)

Floriline Display Products Corporation - [www.floraline.com](http://www.floraline.com)

38160 Western Parkway Willoughby, Ohio 44094

Phone: (440) 975-9449 or 800-239-3722

Fax: (440) 918-9043